



CAN

California AfterSchool Network

CONNECT. CONVENE. INSPIRE.

Welcome to the Fall 2024 ELO-P Academy!

Building Quality Expanded Learning Programs

From Policy to Practice: Supporting Quality in Expanded Learning Programs

**Day 1: Wednesday, September 11, 2024
10:00 AM - 12:00 PM**





Mindful Moment

We will begin recording now.



Today's Agenda

10:00 AM: Welcome!

10:15 AM: Workshop Session:

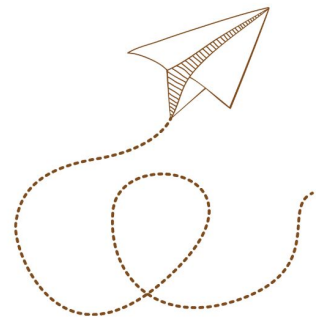
**From Policy to Practice: Supporting Quality in
Expanded Learning Programs**

11:15 AM: Closing Comments

11:20 AM: Field Spotlights: Promising Practices in Action

11:40 AM - Interactive Breakout Sessions

12:00 PM - Zoom Ends



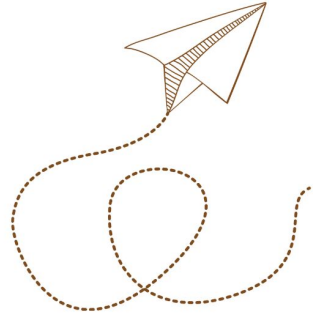
Shared Learning Spaces

We hold our workshops as shared learning & collaborative spaces and often update materials with content & resources lifted throughout the presentation.

We will share resources and contact info via a Google Doc that all participants can access.

(note: for security reasons the full chat cannot be downloaded)

Presentation materials, including the recording will be available shortly (within 24 hours) after the workshop.





Register Today!



Fall 2024 ELO-P ACADEMY

Put your Explorer hat on and join us for a multi-day virtual convening of workshops to support CA ELO Programs in Building Quality Expanded Learning Programs.

10:00 AM - 12:00 PM

Workshop Topics:

- 9/11: From Policy to Practice: Supporting Quality in Expanded Learning Programs
- 9/12: Inclusive Expanded Learning Environments
- 9/17: Leveraging Multiple Funding Streams to Build Quality Expanded Learning Programs
- 9/18: Supporting Our Youngest Learners with Quality Expanded Learning Program

[Registration & Details!](#)



Registration & Details

bit.ly/4bDrFzt



Scan me

You are Invited to...

Fall 2024 **ELO-P Office Hours**

Office Hours include the latest ELO-P developments as well as time for Q&A, discussion, and sharing of promising practices.

12:00 PM - 1:30 PM

September 27

October 25

November 8 & 22

[Registration & Details](#)



SCAN ME

Co-Hosted by members of the
System of Support for Expanded Learning (SSEL)



Connect with us!



/CaliforniaAfterSchool



@ca_afterschool



@caafterschoolnetwork



/ca-afterschool-network



/CaliforniaAfterSchoolNetwork

**Get our latest
info in one place!**



SCAN ME

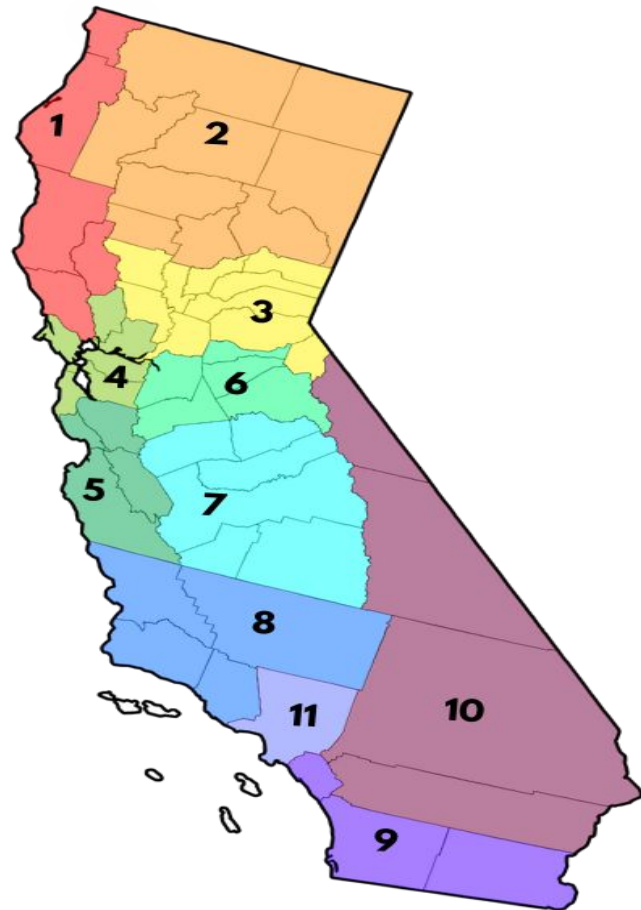
We're here to support YOU!

Contact the System of Support
for Expanded Learning:

bit.ly/SSELcontact



SCAN ME

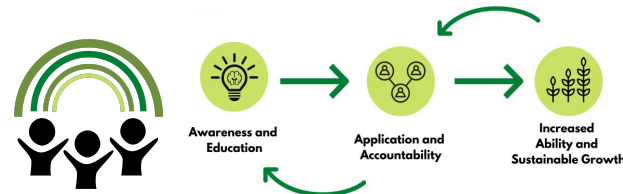


CAN's Expanded Learning Pedagogical Methodology

We believe every child, youth, and the adults that live, love, and work with them deserve just and affirming spaces and opportunities that enrich, empower, enlighten, educate, and elevate them. We know learning happens in every context and young people are assets in supporting their own learning, and co-creating the solutions to the issues and challenges they face.

Expanded Learning/OST spaces can be cultivated by anchoring in some core beliefs and shared mindsets:

- We are rooted in love and love is shown in our actions and our words.
- We are asset-anchored AND driven.
- We are aspirational in our mindsets, words, and actions.
- We are connected by our differences because that is what gives us strength and creates our collective. The appreciation of every culture, language, and lived experience is what we leverage to grow and nurture our collective spaces.
- We make decisions based on elevating the intrinsic gifts, talents, and wisdom of those closest to the problems we work collaboratively to solve.
- We learn by doing and we grow by reflecting on that learning.



Day 1 - From Policy to Practice: Supporting Quality in Expanded Learning Programs



Malia Villarreal

Senior Specialist,
Policy & Outreach



Leslye Lugo

Specialist,
Policy & Outreach



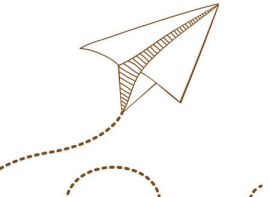
Iqbal Badwalz

Education Administrator
Expanded Learning Division



What we're Doing Today

- **What is Expanded Learning?**
- **ELO-P Overview**
- **Policy Updates**
- **Key Dates & Upcoming Compliance/Monitoring Items**



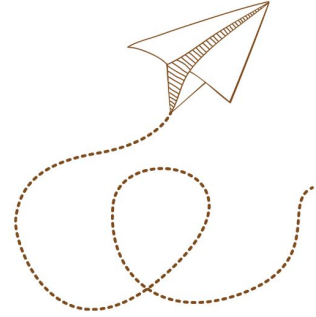
Today's Learning Structure

- Engage in the Chat - share ideas, thoughts, resources, promising practices.
- Reflection Questions
- Join the Facilitated Breakout at the end.



Breakouts - Choose Your Own Adventure!

- Room 1: Learn More about the SSEL
- Room 2: ELO-P Basics
- Room 3: FPM & Audit Promising Practices
- Room 4: Policy Events & Updates and SOC Code



Questions to Consider

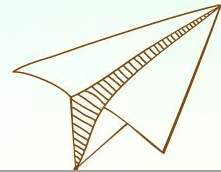
- What stands out from this session? Take note of key phrases and quotes.
- What is inspiring you?
- How does this impact how you think about your work and/or your role?
- What are strategies from today that you might implement within your own Expanded Learning Program?



Opportunities to Get More Granular

- Spring 2024 ELO-P Academy Nuts & Bolts [Resources](#) (including the recording)
- Review the [CDE FAQ's](#)
- Join [Office Hours](#)
- Reach out to the CDE Help Desk: expandedlearning@cde.ca.gov
- Engage with the [System of Support](#) Regional Teams
- Watch [Fireside Chats](#)





What is Expanded Learning?



Expanded Learning Defined

EC 24821.1

For purposes of this article, Article 19 (commencing with Section 8420), and Article 22.6 (commencing with Section 8484.7), the following definitions shall apply:

- (a) “Expanded learning” means before school, after school, summer, or intercession learning programs that focus on developing the academic, social, emotional, and physical needs and interests of pupils through hands-on, engaging learning experiences. It is the intent of the Legislature that expanded learning programs are pupil-centered, results driven, include community partners, and complement, but do not replicate, learning activities in the regular schoolday and school year.

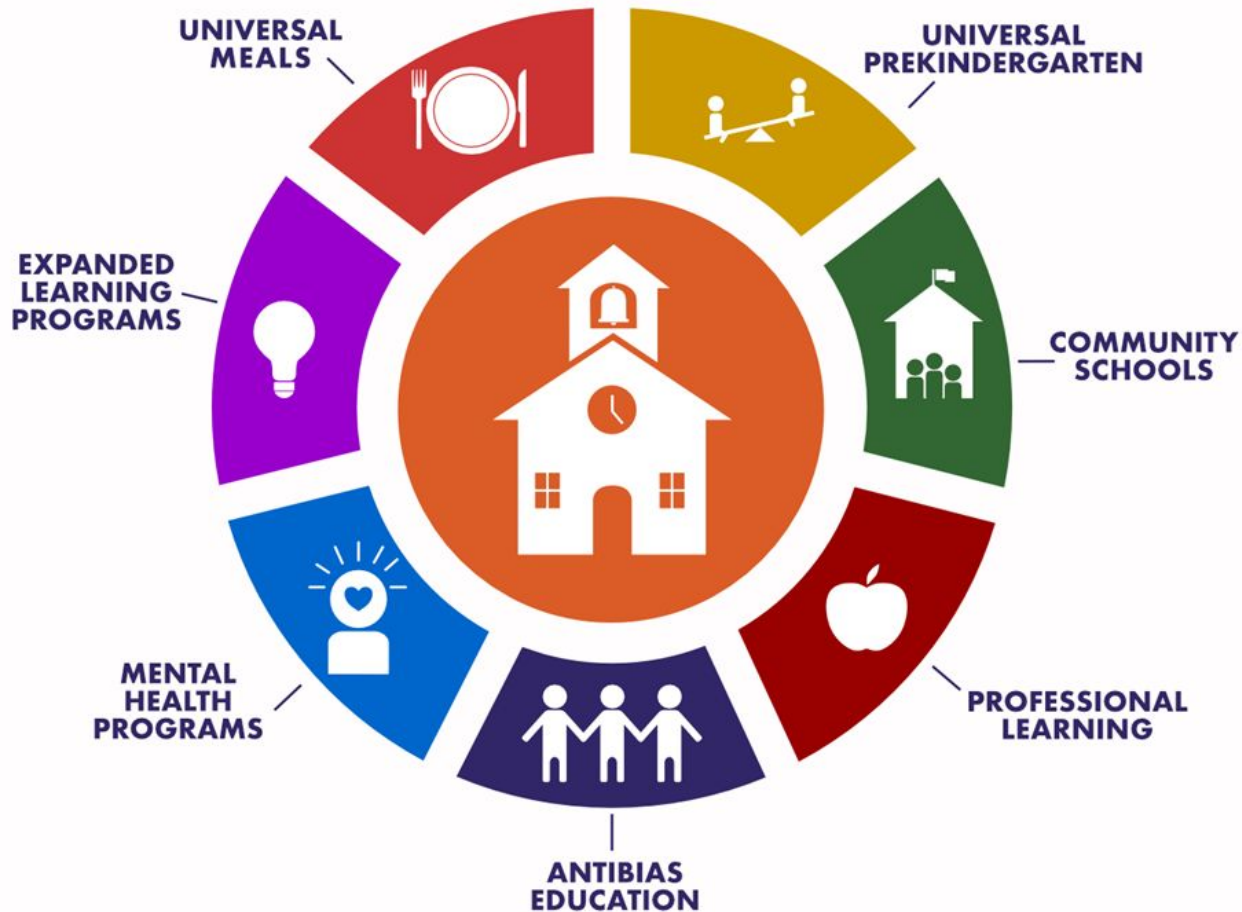
“Expanded learning means before school, after school, summer, or intercession learning programs that focus on developing the academic, social, emotional, and physical needs and interests of pupils through hands-on, engaging learning experiences. It is the intent of the Legislature that all Expanded Learning programs are pupil-centered, results-driven, include community partners, and complement, but do not replicate, learning activities in the regular school day and school year.”

-California Department of Education





TRANSFORMING CALIFORNIA SCHOOLS



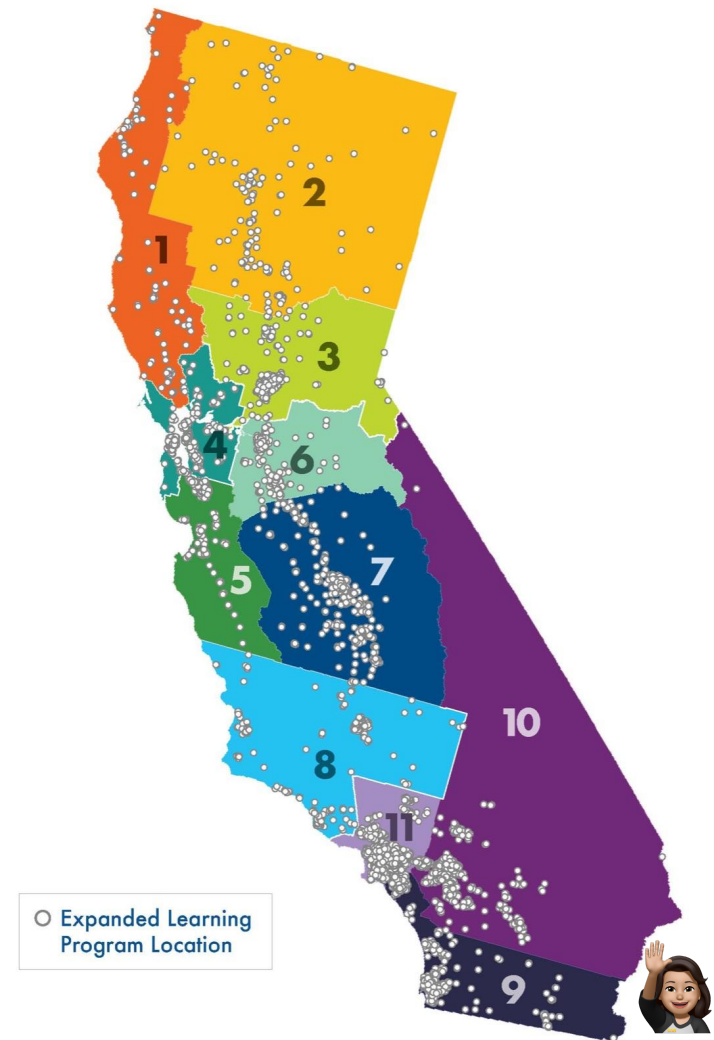
California's Programs

VISION:

Expanded Learning Programs are an integral part of young people's education, engaging them in year-round learning opportunities that prepare them for college, career, and life.

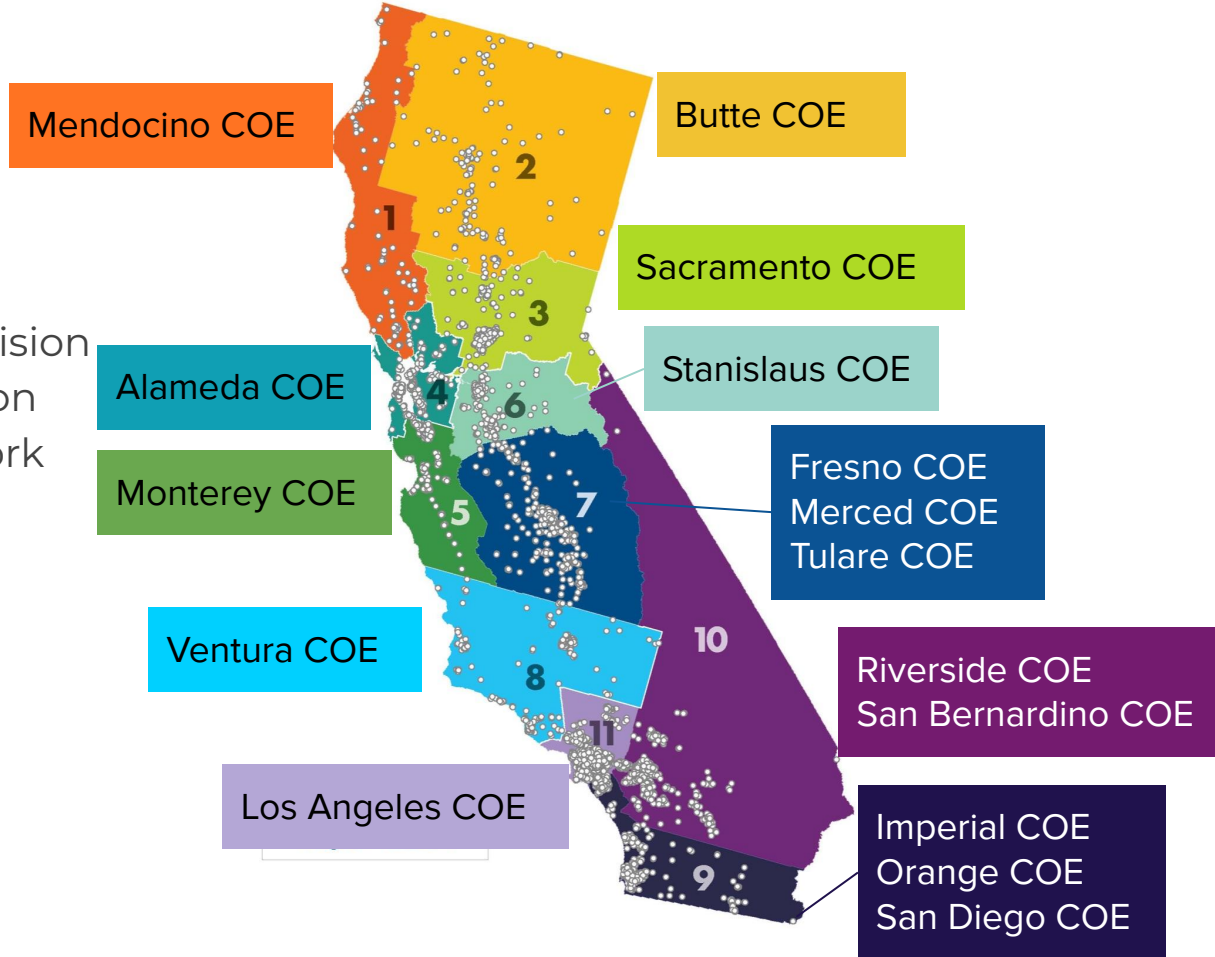
California has the largest and one of the highest rated systems of school-based and school-linked Expanded Learning programs (before school, after school, intersession, summer) in the nation. These programs, which exist in nearly every school district in the state, offer a flexible environment to support student and family wellness.

Pre-Pandemic the state-funded After School Education and Safety (ASES) program and federally-funded 21st Community Learning Center (21st CCLC) program operated at over **4,500 sites with over 980,000 students** enrolled. The vast majority (85%) funded exclusively by the state.



System of Support for Expanded Learning (SSEL)

- CDE Expanded Learning Division
- 16 County Offices of Education
- California AfterSchool Network
- ASAPconnect
- SSEL STEAM Hubs



The Quality Standards for Expanded Learning in California

*High quality programs
create conditions that
support positive
developmental outcomes
consistent with the
Science of Learning and
Development.*



Quality Standards for Expanded Learning in California:

Creating and Implementing a Shared Vision of Quality

CONTENTS

INTRODUCTION / BACKGROUND	3
DESCRIPTION OF STANDARDS AND CROSSWALK	4
RECOMMENDED USES	5
QUALITY STANDARDS IN ACTION	6
SUMMARY OF WORK GROUP PROCESS	19
WORK GROUP PARTICIPANTS	20
GLOSSARY OF TERMS	21
REFERENCES	22



*"This bold initiative provides a
road map for improving expanded
learning throughout California."*

- Tom Torlakson

Superintendent of Public Instruction

FINAL RELEASE: SEPTEMBER 2014

Informed by Expanded Learning stakeholders
and practitioners, and produced in collaboration
between the California Department of
Education, After School Division, and
the California AfterSchool Network.



Types of Quality Standards



Learn More: [Expanded Learning in California: Quality Standards](#)

Point-of-Service

- Safe and Supportive Environment
- Active and Engaged Learning
- Skill Building
- Youth Voice and Leadership
- Healthy Choices and Behaviors
- Diversity, Access, and Equity

Programmatic

- Quality Staff
- Clear Vision, Mission, Purpose
- Collaborative Partnership
- Continuous Quality Improvement
- Program Management
- Sustainability



Quality Standards

Let's Reflect

- What is a standard your programs are focusing on?
- What Quality Standards are you already focused on?
- Which ones might you focus on this year or next year?



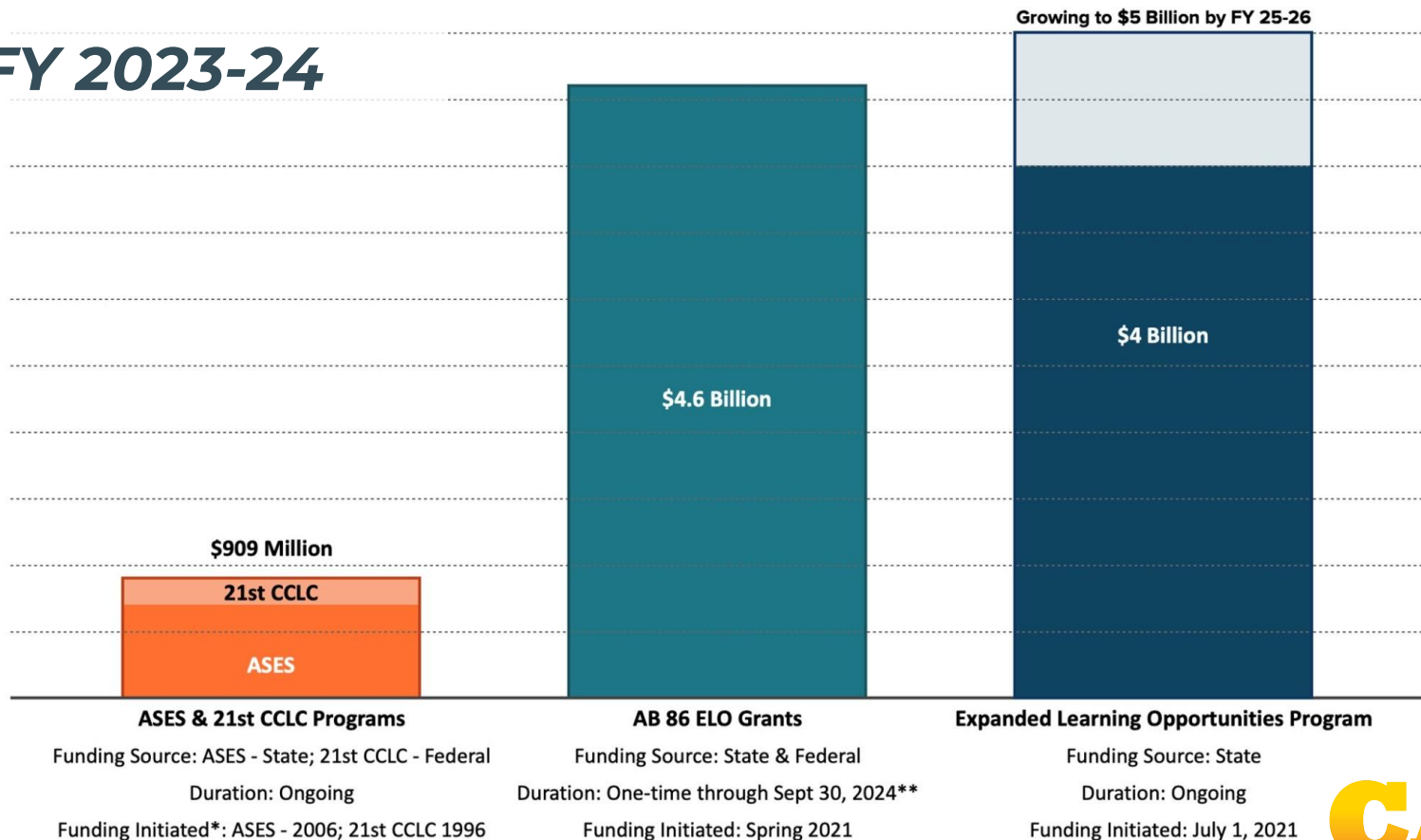
Expanded Learning Funding Sources

Name	Source	Duration	Grades	Determination	Recipient	Ed Code
After School Education and Safety Program (ASES)	State	Ongoing	TK-8	Competitive Application	School Based Awards	8482 - 8484.65
Expanded Learning Opportunities Program (ELO-P) <i>Result of AB 130, later amended by AB 181</i>	State	Ongoing	TK-6*	Formula Based Apportionments	LEA Based Awards, <i>Site Distribution is locally determined</i>	46120
21st Century Community Learning Centers (21st CCLC) Elementary/Middle	Federal	Ongoing	TK-8	Competitive Application	Site Based Awards	8484.7 - 8484.9
21st CCLC Afterschool and Enrichment for Teens Program (ASSETs)	Federal	Ongoing	9-12	Competitive Application	Site Based Awards	8420 - 8428
Expanded Learning Opportunity Grant (ELO-G) <i>Result of AB 86 Funding (COVID Relief)</i>	Federal & State	One Time <i>Expires 2023/2024</i>	TK-12	Formula Based Apportionments	LEA Based Awards	43520 - 43525

**Funding is apportioned to districts that serve TK-6 students. Once districts meet the minimum requirements they can offer programming to students in other grades.*



FY 2023-24



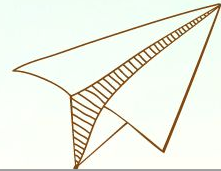
*Initiated refers to the first year that funding was released. Programs were created in earlier legislation and ASES evolved out of an earlier state-funded after school program established in 1998.

**Funded through 2 state resource codes and 4 federal resource codes with different expenditure dates and reporting requirements. Can be utilized Expanded Learning supports as well as other learning recovery strategies.



CONNECT. CONVENE. INSPIRE.





ELO-P Overview



The Intent of ELO-P

ELO-P Funding Ensures All Districts* Provide Expanded Learning

LEA's (local educational agencies) benefit from **billions of dollars** in funding to holistically support students before school, after school, and during summer/non-school days.

This unprecedented funding allocation goes to ALL LEAs* that serve students in grades TK-6 to ensure that all students in California have equal access to comprehensive and transformative Expanded Learning opportunities.

[California Education Code Section 46120](#)



ELO-P Key Details

- Announced in Governor Newsom's May Budget Revise (May 2021)
- Establishes a new **ONGOING** funding source for Expanded Learning programs
- ASES, 21st CCLC Elementary/Middle School, and the ELO-P should be considered a single, comprehensive program
- The intent is to offer all students access to Expanded Learning programs, prioritizing unduplicated students

Unduplicated Pupils

*A pupil enrolled in a school district or a charter school who is classified as an **English learner, FRPM eligible** (eligible for free or reduced-price meal), or is a **foster youth**.*



ELO-P Elements & Expectations

- Have your Program Plan which is based on 11 of 12 Quality Standards.
- Review and update at least every 3 years that needs to be approved by an LEA's governing board in a public meeting and posted on the LEA's website.
- LEA's are encouraged to collaborate with community based organizations (CBO's).
- Program Elements are similar to ASES/21st CCLC.

Days & Hours of Program Operation:

- All School Days, In-Person
 - before and/or after school
 - no less than Nine Hours (Core Day + Expanded Learning Hours = 9 Hours)
- Non-School Days, In-Person
 - at least 30 Days
 - no less than Nine Hours
 - Inclusive of extended school year days and Saturdays
- Students have to be in-person, but programming can be provided in a variety of formats



ELO-P Elements & Expectations

Frontier Exceptions

For programs located in a frontier designated geographical location*:

- Program requirements are **no less than eight hours** of combined instructional time, recess, meals, and in-person before or after school expanded learning opportunities per instructional day.
- **No less than eight hours** of in-person expanded learning opportunities on at least 30 non-school days, during intersessional periods.

**Frontier designated geographic location means a school site in an area that has a population density of less than 11 persons per square mile.*

- Staffing Requirements match ASES & 21st CCLC
 - Ratios must be 20:1 except TK/K must be 10:1
 - Must meet districts IA requirement
- Offer & Access



Family Fees & Prioritization

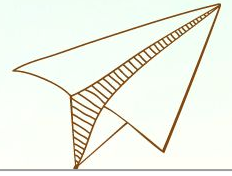
ASES & 21st CCLC Priority Enrollment	ELO-P Unduplicated Pupils
<ul style="list-style-type: none">• Eligible for Free & Reduced Price Meals (includes Migrant and Homeless Youth)• Foster Youth	<ul style="list-style-type: none">• Eligible for Free & Reduced Price Meals (includes Migrant and Homeless Youth)• Foster Youth• English Learner• Homeless Youth** (prioritized for Intersession Programs)
Fees (applicable to ASES, 21st CCLC, & ELO-P)	
<ul style="list-style-type: none">• Cannot charge foster youth, students eligible for Free & Reduced Price Meals (including migrant and homeless youth).<ul style="list-style-type: none">◦ This means technically fees can be charged to English Learners if they do not fit into one of the other above categories.• Family fees should be on sliding scale, based on ability to pay.	



Provide Access - Transportation

For an LEA receiving an ELO-P apportionment, transportation shall be provided for any student who attends a school that is not operating an ELO-P to attend a location that is providing an ELO-P, and to return to their original location or another location that is established by the LEA.





CA Budget Update



2024 California Legislative/Budget Calendar



Jan	Feb	Mar	April	May	June
Session	Session	Session & Recess	Session	Session	Session
Jan 1 Statutes take effect Jan 3 Legislature Reconvenes & Bill Introduction Continues By Jan 10 Governor Releases Budget Proposal	Budget Subcommittees Hearings Feb 16 Bill Introduction Deadline	Budget Hearings Continue Policy Committees Review Bills Spring Recess (Mar 21 - 31)	April 1 Legislature Reconvenes Deadlines for Bills to Pass Out Committees Begins (End of April)	By May 14 Governor Releases Revised Budget Proposal (May Revise) Deadlines for Bills to Pass Out Committees Continues May 24 Deadline for Bills to Pass out of House of Origin	By June 15 A Balanced Budget Bill Must Be Passed June 27 Last Day for a Legislative Measure to Qualify for the Nov 5 Election Ballot By June 30 the Governor Signs Budget Bill
July	Aug	Sept	Oct	Nov	Dec
Summer Recess	Session	Recess	Recess	Recess	Session
July 3 Summer Recess Begins (Provided Budget Bill Has Passed)	Aug 5 Legislature Reconvenes Aug 31 Last Day for Each House to Pass Bills, Final Recess Begins Upon Adjournment	Sept 30 Deadline for Governor to Sign or Veto Passed Legislation		Nov 5 General Election	Dec 2 Regular Session Convenes for Organizational Session


In odd numbered years, the legislative year goes from January to October. In even numbered years, the legislative session goes from January to August to allow legislators time to campaign for their elections in September - November.


2024-25 Budget Impacts on Expanded Learning

In late June the Governor and Legislature reached an agreement on the 2024-25 California Budget and on June 26, Governor Newsom signed the [Budget Act of 2024 \(AB 107\)](#). Governor Newsom made it clear that the budget would maintain strong support for schools, including Expanded Learning:

- Maintain \$4 billion in **ongoing** funding for ELO-P (Expanded Learning Opportunities Program).
- Maintains existing reimbursement rates for ASES and 21st CCLC programs.




 **GOVERNOR'S BUDGET 2024-25**



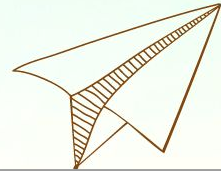
TRANSFORMING TK - 16

- **\$4 BILLION ONGOING:** Before / after school and summer school
- **\$1.8 BILLION ONGOING:** Universal TK
 - \$2.9 Billion when fully implemented
- **\$1.5 BILLION ONGOING:** Universal school meals
- **\$931 MILLION ONGOING:** Arts, music, and instructional materials discretionary block grant (Prop 28)
- **\$300 MILLION ONGOING:** Equity multiplier



“We’re also finally fulfilling the vision of before and after school as well as summer school for all, investing billions of dollars to make it universal.” - Gavin Newsom





CA Budget Trailer Bills





WHAT IS A TRAILER BILL?

The Governor's proposed budget in January typically requires changes to existing law in order to implement these budget changes. If changes are necessary, separate budget implementation bills or "trailer bills" are introduced in order to implement the change.



Understanding Budget Trailer Bills

Here's what you need to know about “trailer bills” at this point in the budget process.

- Trailer bills are organized by issue areas such as “K-12”, “higher education”, and “housing.”
- Trailer bills are heard concurrently with the Budget Bill and move through the Assembly and Senate budget committees.
- Trailer bills are NOT beholden to the June 15th Budget Act deadline or the regular budget committee deadlines.
- Trailer bills take effect immediately upon the Governor’s signature and typically only require a majority vote.



Trailer Bill Impacts

SB-153 Education finance: education omnibus budget trailer bill was signed into law on June 29, 2024 and has several impacts to Expanded Learning:

- ELO-P Expenditure Deadlines
- ELO-P Intent to Run Requirement
- ELO-P "Rate 2" LEAs
- Attendance Recovery

***AB-176 Education finance: education omnibus budget trailer bill** passed by the legislature and is on the Governor's desk. It will likely be signed and has impacts on Expanded Learning:

- ELO-P Expenditure Report & Deadline for Prior-Year Funds
- Attendance Recovery



Updated ELO-P Expenditure Deadlines

What Already Existed:

ELO-P Apportionments received during FY 2021-22 and 2022-23 may be expended or encumbered by June 30, 2024. It was recommended by CDE that funds encumbered by June 30, 2024 be expended by September 30, 2024.

What Was Updated:

The new law officially requires these encumbered funds to be expended by September 30, 2024. Any unspent funds will be returned to the state.

What's New:

Beginning with FY 2023-24 ELO-P Apportionments must be expended by June 30 of the following fiscal year. Any funds NOT expended by the school district or charter school by the end of this period shall be returned to the state. (i.e. FY 2023-24 ELO-P Apportionments must be expended by June 30, 2025 or be returned to the state).



New Update - Trailer Bill AB 176



This bill has passed the legislature and has made it to the governor's desk. It is expected to be signed which would put it into effect immediately.

Expenditure Report Deadline:

For FY 2021-22 and FY 2022-23, local educational agencies (LEAs) will be required to submit an expenditure report to the CDE after the September 30, 2024 expenditure deadline.

The report is **due October 31, 2024.**

A local educational agency that does not submit the final expenditure report **shall forfeit all funds allocated for the 2021-22 and 2022-23 FYs.**

California Education Code Section 46120 (c)(B) requires each local educational agency that received an allocation pursuant to subparagraph (A), (B), or (c) of paragraph (1) for the 2021-22 fiscal year or the 2022-23 fiscal year shall report final expenditures to the department on or before October 31, 2024, which shall initiate collection of any unexpended funds.

A local educational agency that does not submit the final expenditure report shall forfeit all funds allocated for the 2021-22 and 2022-23 fiscal years pursuant to subparagraphs (A), (B), and (C) of paragraph (1).

New Update - Trailer Bill AB 176

ELO-P Expenditure Report Website

You can submit your LEAs expenditure report on the Expanded Learning Opportunities Program (ELO-P) Expenditure Report website at

<http://www2.cde.ca.gov/elop>

Enter the LEA's unique access code and include:

- LEA Name: XXXXX
- CDS Code: XXXXXXXX
- Password/Pin: XXXXXX

Support and Assistance:

- ExpandedLearning@cde.ca.gov

Expanded Learning Opportunities Program (ELO-P) Expenditure Report

ELO-P Allocation Amount Overview

[Help - Fund Overview](#)

2021-22 Allocation Amount: \$

2022-23 Allocation Amount: \$

2021-22 ELO-P Fiscal Report

2021-22 Allocation Amount: \$

2021-22 Expended Amount: \$

2021-22 Remaining Amount: \$

2022-23 ELO-P Fiscal Report

2022-23 Allocation Amount: \$


2022-23 Expended Amount: \$

2022-23 Remaining Amount: \$

ELO-P Contact Info

[Help - Contact Information](#)

Contact Information of Person Completing Form



Summary of ELO-P Expenditure Report Deadlines

Apportionment Year	Expenditure Deadline**
FY 2023-24	June 30, 2025
FY 2024-25	June 30, 2026
FY 2025-26...	June 30, 2027...
	Expenditure Report Deadline (New Update)***
FY 2023-24	September 30, 2025
FY 2024-25	September 30, 2026
FY 2025-26...	September 30, 2027...

****Funds not expended** by these deadlines must be returned to the state.

***** LEAs that do not submit expenditure reports** by these deadlines shall forfeit all funds allocated for the designated apportionment year.



Intent to Run ELO-P

What's New

Beginning in FY 2025–26 local educational agencies (LEAs) shall annually declare their operational intent to run an ELO-P to the California Department of Education (CDE).

The CDE will provide instructions and forms for this process.

This process including the instructions and forms are still to be developed. As more details are known they will be shared out in various forums including Fireside Chats, [Office Hours](#), newsletter/e-blast updates from CAN, and official information posted on the CDE website.

Additionally, to the extent possible, any funds made available by LEA decisions not to operate an ELO-P may be reallocated to “Rate 2” LEAs.



Rate 2 LEAs

What's New

As outlined in the [Expenditure Deadline section](#), ELO-P apportionments from FYs 2021-22 and 2022-23 must be expended by September 30, 2024. Any funds not spent must be returned to the state.

For FY 2024–25, those returned funds shall be used to provide a Rate 2 at \$2,000 per student. If there is insufficient funding to provide the full amount the Superintendent may prorate that amount.

Beginning in FY 2025-26 (as LEA's must [annually declare their intent to run an ELO-P](#)), any funds made available by an LEA's decision not to run an ELO-P, may be reallocated to Rate 2.



Rate 2 LEA's: Background Information

ELO-P Funding is currently organized into two “rates” based on an LEA’s Unduplicated Pupil Percentage (UPP) impacting the funding amount for LEA’s and the subsequent requirements for program offering and student access.

	Tier 1 LEA's	Tier 2 LEA's
UPP <i>Based on prior FY LCFF UPP</i>	Greater than or equal to 75%	Less than 75%
Offer*	Offer to ALL students in TK-6 access to programs	Offer to at least ALL UNDUPLICATED students in TK-6, access to programs
Provide Access*	Provide access to ANY student whose parent or guardian requests their placement in a program	Provide access to ANY UNDUPLICATED student whose parent or guardian requests their placement in a program
Apportionment Funding Calculation	(Rate 1) X (ADA**) x (UPP)	(Rate 2) X (ADA**) x (UPP)
	<i>**ADA: prior fiscal year second period reported kindergarten and grades 1 to 6, inclusive, classroom-based average daily attendance.</i>	
FY 23-24 Rates	Beginning in FY 2022–23, Rate 1 is set at \$2,750	\$1,802.66... <i>As currently structured Rate 2 fluctuates each year based on the remaining funds in the appropriation after Rate 1 apportionments are calculated.</i>
FY 24-25 Rates	Remains at \$2,750	\$1,579.55...

*While the law outlines offer and access requirements, actual **student attendance is based on the individual needs of the student and their family.**



Attendance Recovery Programs



- This is an **optional** opportunity for Districts to recover attendance. Participation in the program is **voluntary** (at the election of the student/parent/guardian).
- Attendance Recovery programs may be operated before or after school, on weekends, or during intersession. This includes as a component during ASES/21st CCLC/ASSETs/ELO-P programming, or it could be operated separately from Expanded Learning programming during those times.
- There is **no additional funding** to support the implementation of this program should a district choose to implement one.
- Besides clarifying that Attendance Recovery Programs **could be a component** of an Expanded Learning program, this **doesn't otherwise alter the requirements** for Expanded Learning programs.
- Attendance Recovery programs must be under the **immediate supervision of a certificated teacher who is also an employee** who is also responsible for the documentation of attendance recovery.
- **CDE must develop and post guidance** on its website on or before June 30, 2025.

Attendance Recovery Programs

- **Implementation** of Attendance Recovery would begin **July 1, 2025**.
- Attendance Recovery cannot result in an individual student being credited for more than **10 days of attendance** (or the number of absences the student accrued that school year) in a school year (July 1 – June 30). It will be credited in the year in which the program is operated.
- Average Daily Attendance can be **accumulated** in **1-hour increments**.

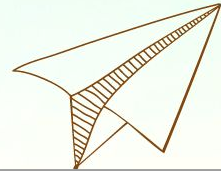
New Update: Shall not exceed a **pupil-to-certificated teacher ratio** of **10 to 1** for **transitional kindergarten and kindergarten** or **20 to 1** for **grades 1 to 12, inclusive**. A local educational agency shall maintain documentation demonstrating how the attendance recovery program met the applicable ratios required pursuant to this subdivision.



Let's Reflect

- When is the 2021–22 and 2022–23 FY expenditure report due?
- What will happen if an LEA does not submit the expenditure report by the due date?
- Where do funds not expended by the deadlines go?
- Is Attendance Recovery a requirement?
- When would implementation of Attendance Recovery begin?





Legislative Updates



Legislative Updates: AB 1113 (McCarty) - On Governor's Desk

[Access the Current Legislation](#)

Background: AB 1113 was introduced in 2023 by Assemblymember McCarty and sponsored by CA3. This 2 year bill was removed from the inactive file and reintroduced with amendments.

If signed by the governor it would do the following:

1. Beginning in 2025-26 school year, would allow CDE to capture ELO-P access data (enrollment) in CALPADS and may include ASES and 21st CCLC programs.
2. Beginning with the 2025-26 school year, CDE will provide guidance and recommendations to LEAs in the collection of pupil participation data for students enrolled in an expanded learning program.

The CA Expanded Learning Research and Evaluation Strategy Committee (RESC) has discussed details for these recommendations.

Note: Previous iterations of this bill included a COLA for ASES and 21st CCLC programs that was amended out of the bill. The "Reprioritization of Funds" component of the bill was removed during the most recent amendments on 8/27/24.



Legislative Updates: Rate 2 & AB 2112 (Muratsuchi) - Suspense

Bill Info: Newly introduced legislation sponsored by San Diego Unified School District to address the concerns about ELO-P Rate 2 fluctuations from year to year.

As currently proposed, the legislation would do the following things:

1. Convene Stakeholder Workgroup & Provide Recommendations by Nov 1, 2025 on:

- Rate Stabilization
- ELO-P Best Practices
- Blending & Braiding, One Comprehensive Program
- Cost-of-Quality
- Annual COLA's
- Minimum Allocations
- Family Fees
- ELO-P Data Collection, Evaluation, & Reporting
- Clarifying "offer"

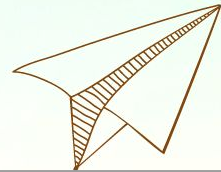
Workgroup Members:

- CDE staff
- Providers
- LEAs
- Parents
- Students
- Community Partners

~~2. Rate Stabilization set rates to be no less than those from FY 22-23~~

Note: The "Rate Stabilization" component of the bill was removed during the most recent amendments on 6/6/24.





Standard Occupational Code Summary (SOC)



Standard Occupational Code (SOC) Summary

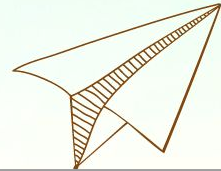
The California AfterSchool Network (CAN) and many others envision a society where Out-of-School-Time (OST) workforce are valued members of our society; supporting and nurturing them is crucial to sustain high-quality programming and honor their humanity by creating supportive and respectful conditions that support them to thrive. One of many strategies to accomplish this bold vision is to establish a Standard Occupational Classification (SOC) code.

The Standard Occupational Classification (SOC) system is a [federal statistical standard](#) used by federal agencies to classify workers into occupational categories for the purpose of collecting, calculating, or disseminating data.

CAN and the *Afterschool Alliance* brought together 16 organizations that represent various youth development sectors, including statewide and national organizations, to draft a proposal to add a new code to the SOC system.

Scan the QR Code or click the link to learn more: <https://bit.ly/SOCwork>





Federal Program Monitoring (FPM)





Tony Thurmond
State Superintendent
of Public Instruction

What We Will Cover Today

- Key dates for Audits / Federal Program Monitoring (FPMs)
- New Compliance Items
- Where resources can be found
- LEA notification for FPMs
- Promising practices, scenarios, and what's on the horizon



Tony Thurmond
State Superintendent
of Public Instruction

Acronyms

- 21st CCLC - 21st Century Community Learning Center
- ASES - After School Education and Safety Program
- ASSETS - 21st Century High School After School Safety Enrichment for Teens Grant Programs
- CDE - California Department of Education
- CMT - CDE Monitoring Tool
- ELO-P - Expanded Learning Opportunities Program
- EPC - Education Programs Consultant
- EXLP - Expanded Learning Program
- FPM - Federal Program Monitoring
- LEAs - Local Educational Agencies
- MOU - Memorandum of Understanding
- PMO - Program Monitoring Office
- SFSD - School Fiscal Services Division



Tony Thurmond
State Superintendent
of Public Instruction

Key Dates for Audits

- Currently auditors are in the field performing audits for FY 2023-24
- Annual audit report for FY 2023-24 is to be issued by December 15, 2024
- 2024-25 Audit Guide was posted on the Education Audits Appeal Panel's webpage on July 1, 2024

Key Dates for FPMs

- 2024-25 online and on-site FPMs are currently being conducted.
- Approximately 15 CDE programs are being reviewed for FPM, EXLP is one of those programs.
- LEA Superintendents were notified of FPM reviews in May 2024
- EPCs from Program Monitoring Office (PMO) have contacted LEAs/Grant Coordinators



Tony Thurmond
State Superintendent
of Public Instruction

New Compliance Items

Audit Guide:

- Programs charging fees for ELO-P will be audited starting 2024-25

FPM Process:

- Sustainability added to comply with ED requirements (EXLP 01)
- Program Evaluation (EXLP 12)
- Safety Issues/Transportation (EXLP 17)



Tony Thurmond
State Superintendent
of Public Instruction



Tony Thurmond
State Superintendent
of Public Instruction

Transparency - Additional Resources

- Audit Guide is available
 - [Education Audit Appeals Panel](#)
- 2024-25 EXLP FPM Instrument
 - [Compliance Monitoring - Testing & Accountability \(CA Dept of Education\)](#)
- EXLP Resources for FPMs
 - <https://cde.app.box.com/v/fpmtraining2425>

Questions — Thank You

Regional Assignments



Tony Thurmond
State Superintendent
of Public Instruction

Regions 1,2,3 - Thu Doan

916- 319-0924 tdoan@cde.ca.gov

Regions 4,5,6 - Kimberly Montes De Oca

916-319-0601 kmontesdeoca@cde.ca.gov

Regions 7,10 - Teng Xiong

916-319-0363 txiong@cde.ca.gov

Regions 8, 9 - Juan Sanchez

916-625-6989 jsanchez@cde.ca.gov

Region 11 - Man Phan

916-323-8204 mphan@cde.ca.gov

Iqbal Badwalz, Administrator Program Monitoring Office

916-319-0732 ibadwalz@cde.ca.gov



Tony Thurmond
State Superintendent
of Public Instruction

Audits Findings

Audit Findings:

Fiscal penalties – Apportionment Office in School Fiscal Services Division (SFSD) will adjust the amounts

Non-compliance – PMO EPCs will reach out to LEAs to obtain additional evidence



Tony Thurmond
State Superintendent
of Public Instruction

FPM Findings

FPM Findings:

PMO Reviewer will resolve the FPM findings

Dispute Resolution Process (New in 2024-25)

Promising Practices



Tony Thurmond
State Superintendent
of Public Instruction

- Grantee/LEA are responsive to reviewer
- Meeting/uploading documents 60/30 days prior to review date
- Not waiting for FPM review to collect documents/data (EXLP 09 and 16)
- Attend statewide FPM trainings
- Attend regional FPM trainings by PMO

Challenges in FPMs

- LEAs lack of oversight over third-party service providers
- MOU/Contracts missing appropriate language (e.g. tracking 15% by site)
- LEAs/Service providers not tracking by funding type and by site (ASES/21st CCLC/ASSETs – funded by site)
- Waiting to upload documents for the last moment



Tony Thurmond
State Superintendent
of Public Instruction



Tony Thurmond
State Superintendent
of Public Instruction

What is on the Horizon

- The CDE will work with you:
- Audits:
 - Audit Findings Resolution starting this fall
- Limited Scope Administrative Review (ELO-P)



Tony Thurmond
State Superintendent
of Public Instruction

Outstanding Audit / FPM Findings

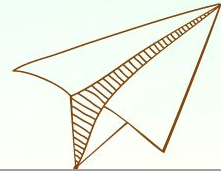
Will result in

- LEA/Grantee **Not in Good Standing**
 - Attendance report not submitted
 - Expenditure reports not submitted
 - Annual outcome-based data not submitted
 - Outstanding audit findings not resolved
 - Outstanding FPM findings not resolved
 - Applicant and Co-applicant not eligible for future funding



Tony Thurmond
State Superintendent
of Public Instruction

Questions—Thank You



Resources



Resources

- CDE FAQ's: www.cde.ca.gov/ls/ex/elofaq.asp - New FAQ's in the Works!
- [CDE ELO-P Webpage](#)
- CDE Help Desk: expandedlearning@cde.ca.gov
- [Quality Standards for Expanded Learning in California](#)
- [SSEL Contact Information](#)
- [CAN Contact Information](#)
- [Entitlements/Appportionments](#)
- [ELO-P Fireside Chats](#)
- [FY 24-25 Apportionment Details](#)

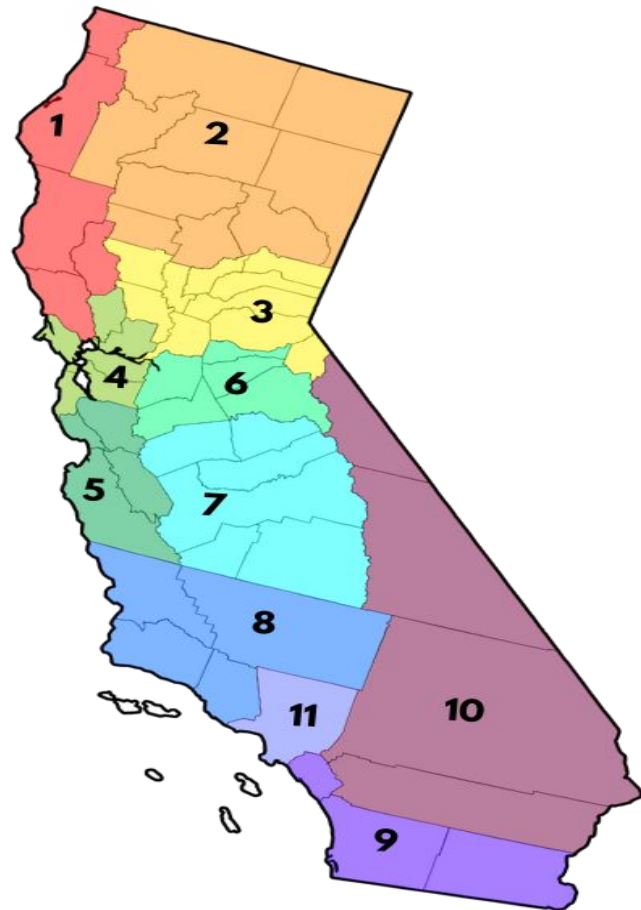
We're here to support YOU!

Contact the System of Support
for Expanded Learning:

bit.ly/SSELcontact



SCAN ME



Field Spotlights: Promising Practices in Action



Tracey Humphreys
ELP District Coordinator
Keyes Union School District



Join Us!



The Power of Expanded Learning to Support Substance Use Interventions, Health, Mental Health, and Thriving Families Workshop

This virtual workshop will provide insight into how Expanded Learning programs offer a dynamic and adaptable environment that can be strategically utilized to enhance student and family wellness and a valuable resource supporting substance use interventions.

Wednesday, September 25, 2024

10:30 AM - 12:00 PM PST

[Registration & Details](#)



bit.ly/47t2dvm



Scan me



2025 *Site Coordinator* **SYMPOSIUM**

February 5, 7-8, 2025

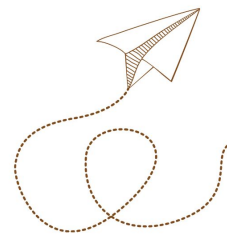
Sacramento

**SAFE CONVENTION CENTER
SHERATON HOTEL**



Thank You **for your participation!**

Please provide us with your feedback.



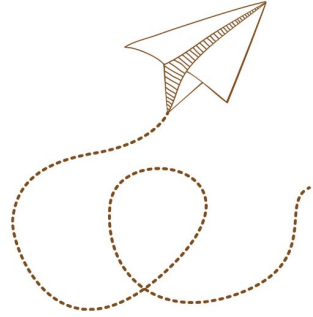
Scan me

bit.ly/3YLPu4I



Breakouts - Choose Your Own Adventure!

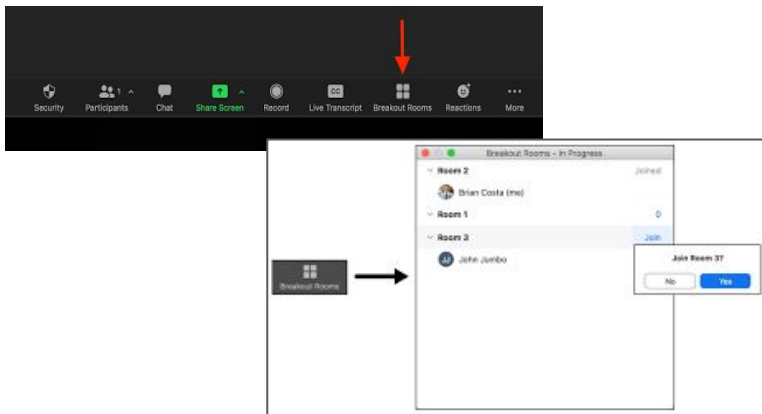
- Room 1: Learn More about the SSEL
- Room 2: ELO-P Basics
- Room 3: FPM & Audit Promising Practices
- Room 4: Policy Events & Updates and SOC Code



Ways to Join the Breakout Rooms

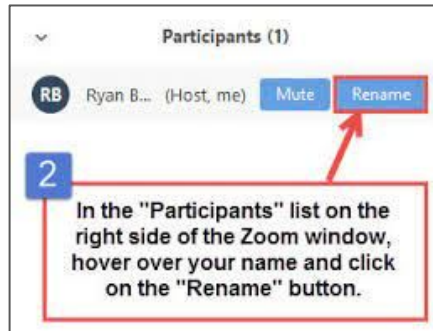
1

1. Using the Zoom Control Bar, at the bottom of your window, click on **Breakout Rooms**. This will display the list of breakout rooms.
2. Then, select the breakout room you would like to join.



2

1. Rename yourself with the room you want to go to, and we will assign you to the breakout room. (i.e. R3 - Heather)
2. In the **"Participants"** list on the right side of the Zoom window, hover over your name and click on the **"Rename"** button



3

If you can't do either steps 1 or 2, we will help you get to a breakout room.