

CBO & LEA Partnerships to Support High-Quality ELO Programs

Resources for Participants

*Workshop materials, including the recording, presentation slides, and resources, will be provided **post-session** on our website and emailed to registered participants.

<https://www.afterschoolnetwork.org/2024-spring-expanded-learning-opportunities-convening>

Presentation/Workshop Resources

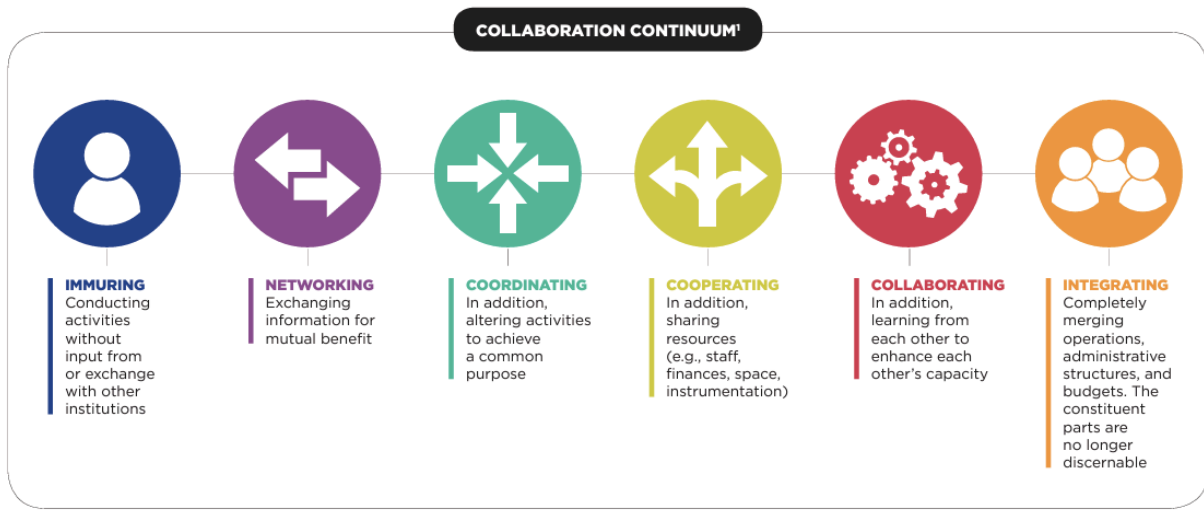
- Evidence of Impact of Partnerships to Bolster Impacts of the Protective Factors:
<https://www.afterschoolnetwork.org/post/evidence-impact-partnerships-bolster-impacts-protective-factors>
- Capacities and Institutional Supported Needed along the Collaboration Continuum:
<https://www.teaglefoundation.org/Teagle/media/GlobalMediaLibrary/documents/resources/CollaborationContinuum.pdf?ext=.pdf>
- Strengthen Partnerships to Support Positive Youth Development: *Building an Action Plan for Partnerships*:
https://docs.google.com/document/d/1yZQuVBosFZvuMYdRNor_NSEutNI_i6Kl8_4eaT4W2Xg/cookie

Additional Resources from the Chat:

- Promoting Protective Factors in California’s Afterschool Program Report PDF:
https://www.afterschoolnetwork.org/sites/main/files/file-attachments/promoting_protective_factors_in_californias_afterschool_programs_june_20212.pdf?1622837569
- “Building clarity, coherence, and support within the LEA” - Connie Cha, Fresno USD
- “Ecosystems are healthier when they are diverse.”
- [Community Engagement Initiative Resources](#) for community decision-making (including youth and families with practical resources you can use in your very next meeting!)
- [California Department of Social Services Asset-mapping Toolkit](#): for community needs assessment and evaluation of local resources to meet those needs.

CBO & LEA Partnerships to Support High-Quality ELO Programs

Resources for Participants



General Workshop Resources

- Spring 2024 ELO-P Academy Feedback Form: <https://forms.gle/HSfQkgJ2UchuKDA>
- Register for ELO-P Office Hours: <https://www.afterschoolnetwork.org/post/elo-p-office-hours-spring-2024>
- Connect with the System of Support for Expanded Learning (SSEL): <https://www.cde.ca.gov/ls/ex/sosexplearncontacts.asp>

Key ELO-P Resources

- CAN's ELO Webpage - access Fireside Chats, ELO-P Updates, Resources and TA: <https://www.afterschoolnetwork.org/elo-program>
- ELO-P FAQ's: <https://www.cde.ca.gov/ls/ex/elofaq.asp>
- CDE ELO-P Webpage - access key info including Program FAQs: <https://www.cde.ca.gov/ls/ex/elopinfor.asp>
- CDE ELO-P Program Plan Guide was produced to assist local educational agencies with planning for the ELO-P. All LEAs must develop, adopt, and post a Program Plan - <https://www.cde.ca.gov/ls/ex/documents/eloppogplanguide.pdf>.
- FY 23-24 Apportionment Information: <https://www.cde.ca.gov/fg/aa/pa/iassf23adv.asp>
- ELO-P Funding Details, including LEA Apportionment amounts: <https://www.cde.ca.gov/fg/aa/pa/elop.asp>
- ELO-P Fireside Chats: <https://www.afterschoolnetwork.org/elo-program-fireside-chats>

CBO & LEA Partnerships to Support High-Quality ELO Programs

Resources for Participants

- ELO Program Updates - AfterSchool Network:
<https://www.afterschoolnetwork.org/elo-program-updates>

Resources from CAN

- Sign-Up for CAN Communications:
<https://www.afterschoolnetwork.org/pod/sign-can-newsletters>
- Access the Quality Standards for Expanded Learning in California:
<https://www.afterschoolnetwork.org/post/quality-standards-expanded-learning-california>
- CAN Contact Info: <https://www.afterschoolnetwork.org/staff-directory>