



# Towards Equity-Driven Whole Child Health and Wellness

Developed by the **Whole Child Health and Wellness Collaborative**

## OUR VISION

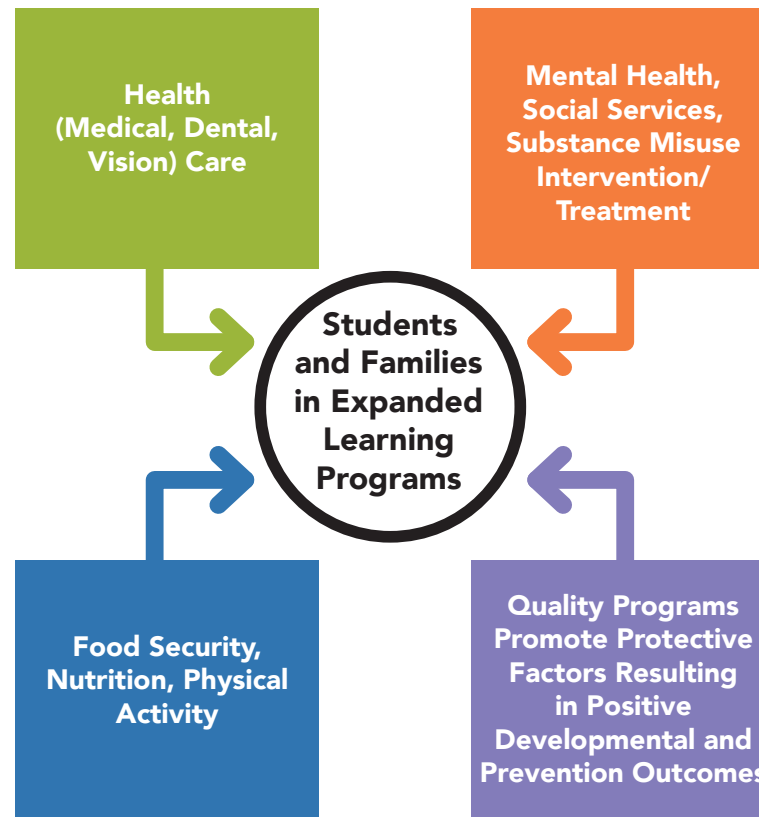
**We see equitable, just, and compassionate California communities and networks where each and every child is well known, well cared for, and well prepared to thrive.**

## OUR MISSION

**Build the foundation for, catalyze, and support multi-sector coalitions, including California's Expanded Learning programs, to realize positive and equitable health and wellness outcomes for whole children, whole families, and whole communities.**

# THE OPPORTUNITY

In California, we have the golden opportunity to rapidly accelerate and maximize this new vision by building upon our network of 4,500 Expanded Learning Programs, that reach over 980,000 children and youth supported by \$800 million in public investment. While it has yet to be substantially achieved, aligning community resources to support whole children, families, and communities is not a new idea. But at this moment, we can make rapid progress by building on our own experience and a growing research base.



# CREATING CONDITIONS FOR THRIVING

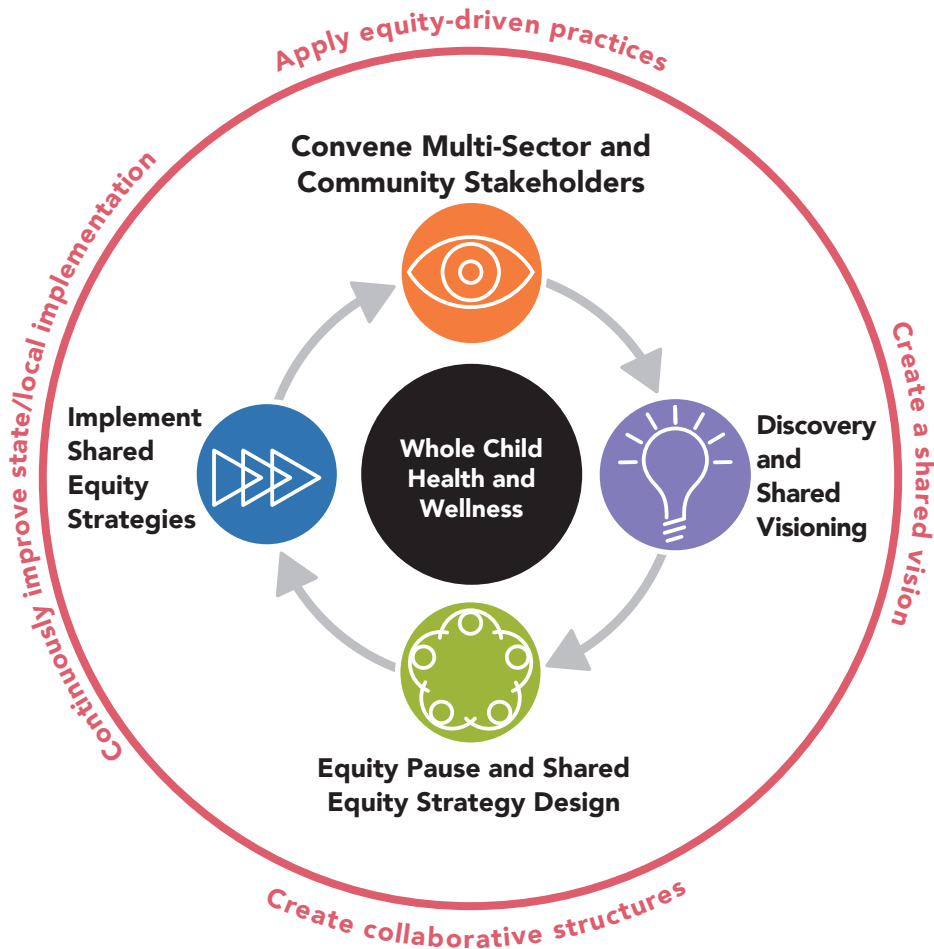
Equity-Driven Planning and Implementation Framework



Shared Equity Strategies



Conditions for Thriving Children, Youth, Families, and Communities



Focus on Youth and Family



Support and Nurture Adult Workforce



Leverage New and Existing Resources



Collaborate Across Systems

Multi-sector coalitions, including California's Expanded Learning Programs, have the capacity to realize positive and equitable health and wellness outcomes for whole children, whole families, and whole communities

RESULTING IN:

Every child being well known, well cared for, and well prepared to thrive.

# A CALL TO ACTION

**Action should be taken immediately by all public and private sector organizations to advance the whole child health and wellness agenda outlined by this Statement of Strategic Direction. Given the unprecedented levels of deep collaboration required to advance this work, we see a particular opportunity for Conveners, entities willing to play a leadership facilitation role in this work, to step forward now. In addition to the foundational equity pause, we call upon our partners in key sectors to take the actions.**

## Convenor

Using foundational equity practices (Liberatory Design<sup>1</sup>, Equity Design Principles<sup>2</sup>), convene and facilitate design cycles that build capacity and community. Use data-driven practices as part of continuous improvement cycles to move, reflect upon, and advance the work.

## Community

Activate, engage, inform, co-create and co-design strategies for change.

## Intermediaries and Community Based Organizations

Lead equity processes and map systems, both internally within their organizations, and across multi-sector initiatives.

## Local Government and Local Educational Agencies

Reorient local priorities to support effective supports for populations at the margins, as defined by those margins.

## Philanthropy

Provide catalytic investments and other resources in support of statewide equity pausing, mapping, and further development of support systems for this work.

## State Government

Incent equity pauses, collaboration, and the de-siloing of state investments and supports for California's children, families and communities.



The Whole Child Health and Wellness Collaborative was convened by the California AfterSchool Network with the generous support of Youth Opioid Response California.

1. The National Equity Project. Liberatory Design is an approach to addressing equity challenges and change efforts in complex systems. Retrieved December 2020 at <https://www.nationalequityproject.org/frameworks/liberatory-design>
2. Equity Design Principles are described in Racism and Inequity Are Products of Design. They can be redesigned. Medium.com retrieved December 2020 at <https://medium.com/equity-design/racism-and-inequity-are-products-of-design-they-can-be-redesigned-12188363cc6a>